

# SCPD TRAFFIC STOP REPORTING

First Half of 2019 – 7th Precinct

**Traffic Stop Reports – Overview**  
**Precinct Reporting – Semiannual**  
 Office of the Commissioner – Legal  
 2019 1<sup>st</sup> Half Report – 7<sup>th</sup> Precinct

**Overview – Department – First Half of 2019**

**Synopsis**

Overview of Traffic Stops conducted per Precinct and total Traffic Stops for the Department. The entirety of this report covers the first 6 full months of 2019.

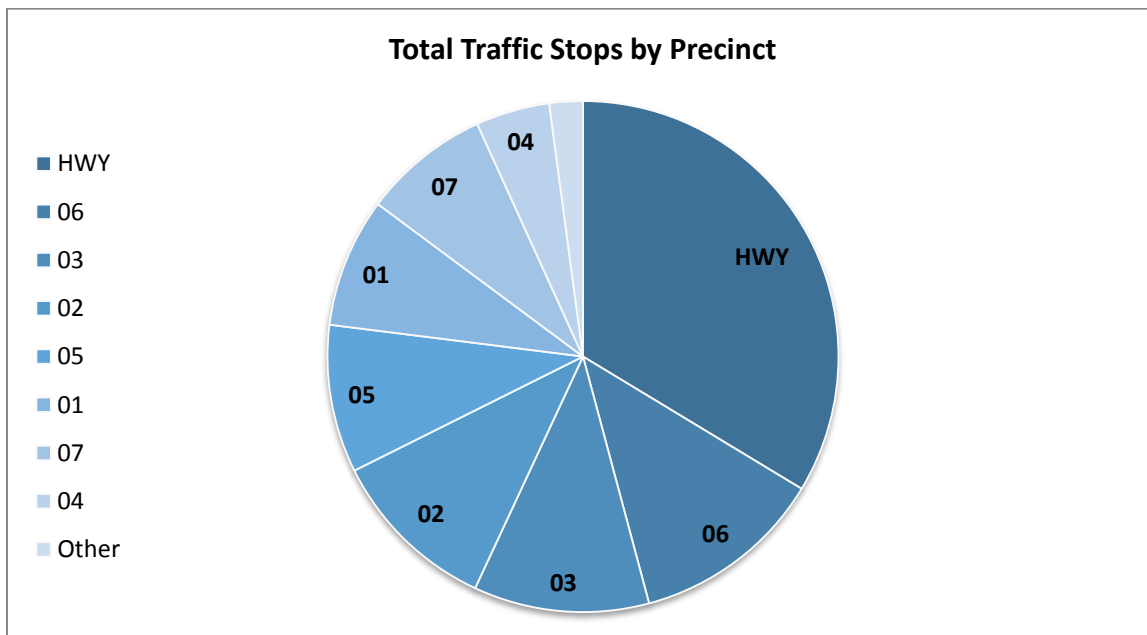
**Tables**

*Counts & Percentages – Traffic Stops conducted.*

Precinct	Total Traffic Stops	
	Stops	%
<b>HWY</b>	21885	33.7%
<b>06</b>	7919	12.2%
<b>03</b>	7218	11.1%
<b>02</b>	6955	10.7%
<b>05</b>	6085	9.4%
<b>01</b>	5320	8.2%
<b>07</b>	5225	8.0%
<b>04</b>	3040	4.7%
<b>Other</b>	1376	2.1%
<b>SCPD</b>	65023	100.0%

**Figures**

*Comparison of Traffic Stops by Precinct.*



**Traffic Stop Reports – Overview**  
**Precinct Reporting – Semiannual**  
**Office of the Commissioner – Legal**  
**2019 1<sup>st</sup> Half Report – 7<sup>th</sup> Precinct**

**Overview – 7PCT – Stop Reason**

**Synopsis**

Traffic Stops broken down by category.

**Tables**

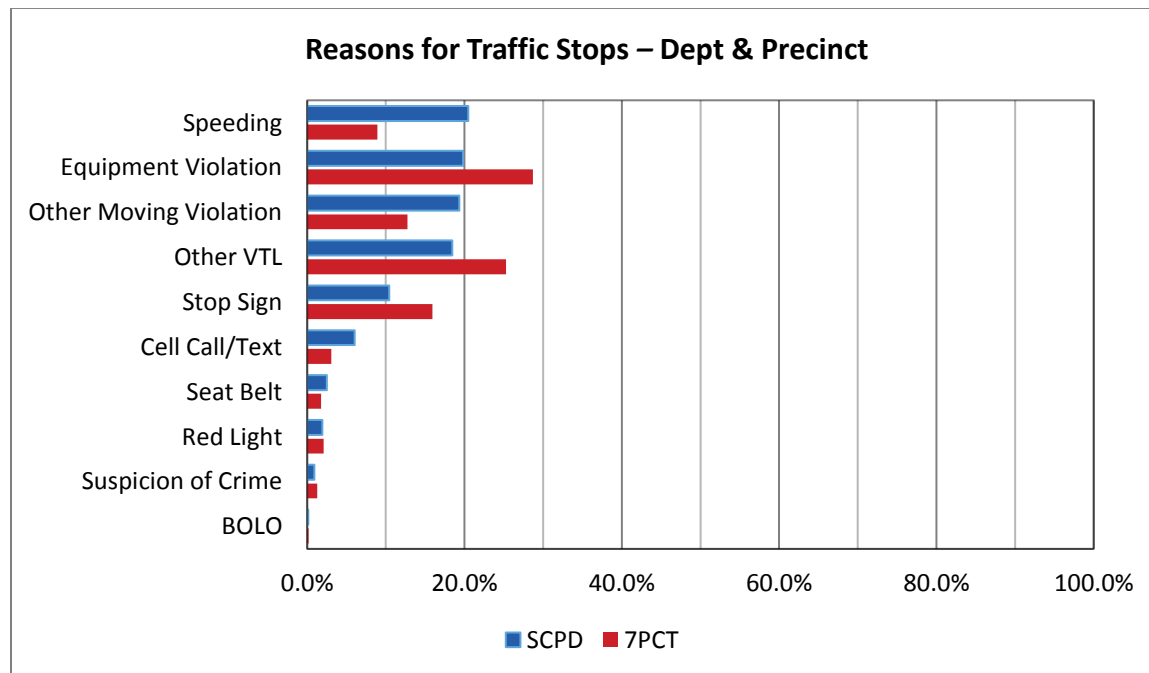
*Counts & Percentages – Reasons why Traffic Stop was conducted. The table on the right contains the total counts of equipment violations occurring per stop, for traffic stops initiated because of equipment violations.*

Category	Reasons for Traffic Stops				PCT	Stops by # of Equipment Violations						
	SCPD	%	7PCT	%		1	2	3	4	5+	**NA	Total
Speeding	13305	20.5%	467	8.9%	01	630	198	43	25	16	696	1608
Cell Call/Text	3923	6.0%	161	3.1%	02	1036	224	22	26	13	681	2002
Red Light	1254	1.9%	110	2.1%	03	1291	251	45	17	5	963	2572
Stop Sign	6773	10.4%	831	15.9%	04	375	60	3	3	1	253	695
Suspicion of Crime	590	0.9%	67	1.3%	05	808	189	26	12	7	604	1646
Other Moving Viol.	12568	19.3%	667	12.8%	06	773	85	11	9	9	908	1795
Seat Belt	1630	2.5%	92	1.8%	07	514	76	6	1	0	903	1500
Other VTL	11994	18.4%	1320	25.3%	HWY	178	51	24	9	31	450	743
BOLO	83	0.1%	10	0.2%	Other	152	20	5	1	0	164	342
Equipment Viol.	12903	19.8%	1500	28.7%	SCPD	5757	1154	185	103	82	5622	12903
<b>Total</b>	<b>65023</b>	<b>100.0%</b>	<b>5225</b>	<b>100.0%</b>								

\*\* NA: data not available or incomplete

**Figures**

*Comparisons of reasons why Traffic Stops were conducted between the Department and your Precinct.*



## Overview – 7PCT – Stop Disposition

### Synopsis

Traffic Stop dispositions broken down by category.

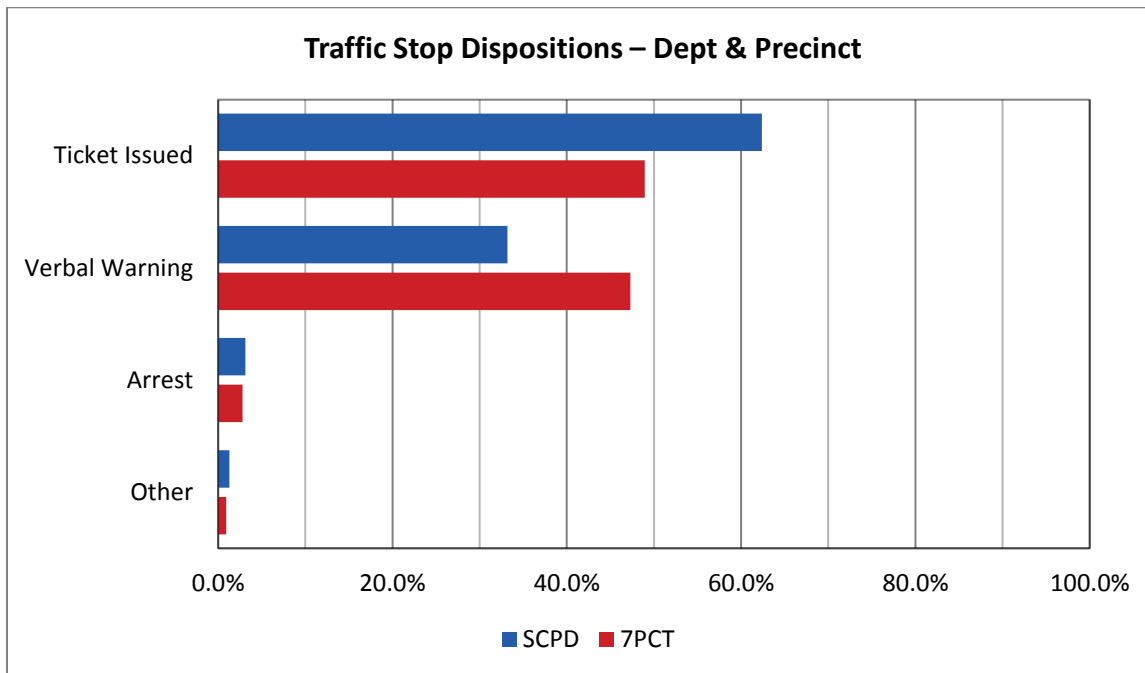
### Tables

Counts & Percentages – Traffic Stop dispositions.

Category	Traffic Stop Dispositions			
	SCPD	%	7PCT	%
Ticket Issued	40557	62.4%	2558	49.0%
Verbal Warning	21589	33.2%	2472	47.3%
Arrest	2035	3.1%	146	2.8%
Other	842	1.3%	49	0.9%
<b>Total</b>	<b>65023</b>	<b>100.0%</b>	<b>5225</b>	<b>100.0%</b>

### Figures

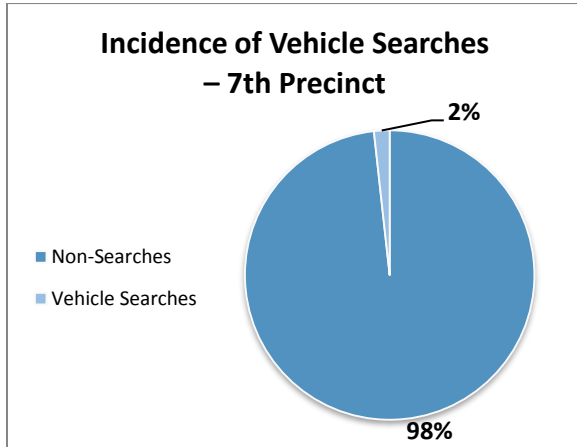
Comparisons of Traffic Stop dispositions between the Department and your Precinct.



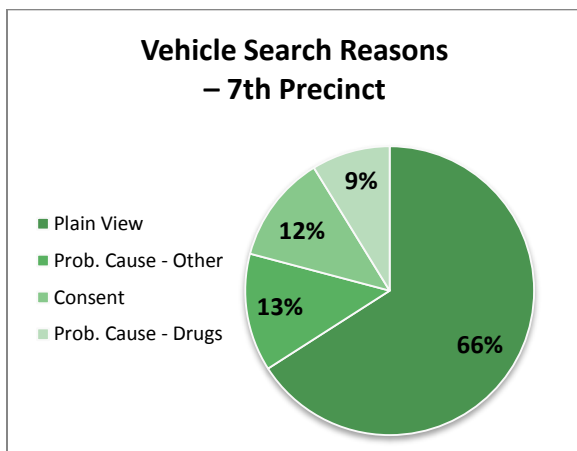
**Overview – 7PCT – Vehicle Searches**

**Tables & Figures**

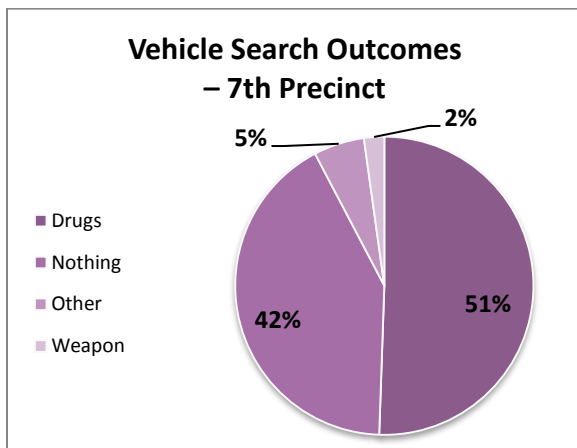
Counts & Percentages – Reasons why Vehicle Searches were conducted and their outcomes.



Category	Vehicle Searches Portion			
	SCPD	%	7PCT	%
Vehicle Searches	1842	2.8%	91	1.7%
Non-Searches	63181	97.2%	5134	98.3%
<b>Total Stops</b>	<b>65023</b>	<b>100.0%</b>	<b>5225</b>	<b>100.0%</b>



Category	Vehicle Search Reasons			
	SCPD	%	7PCT	%
Consent	174	9.4%	11	12.1%
Plain View	1249	67.8%	60	65.9%
Prob. Cause - Drugs	187	10.2%	8	8.8%
Prob. Cause - Other	232	12.6%	12	13.2%
<b>Total</b>	<b>1842</b>	<b>100.0%</b>	<b>91</b>	<b>100.0%</b>

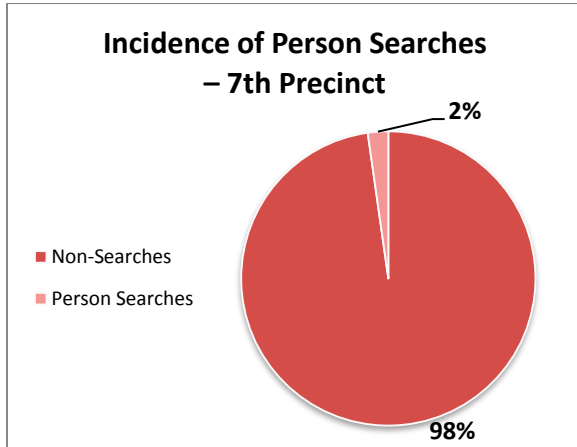


Category	Vehicle Search Outcomes			
	SCPD	%	7PCT	%
Nothing	837	45.4%	38	41.8%
Weapon	23	1.2%	2	2.2%
Drugs	935	50.8%	46	50.5%
Other	47	2.6%	5	5.5%
<b>Total</b>	<b>1842</b>	<b>100.0%</b>	<b>91</b>	<b>100.0%</b>

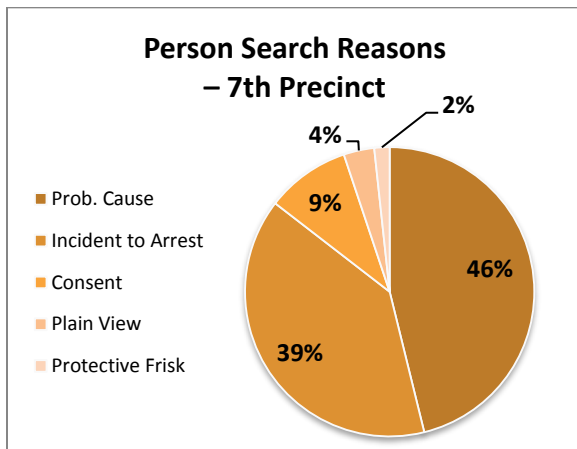
**Overview – 7PCT – Person Searches**

**Tables & Figures**

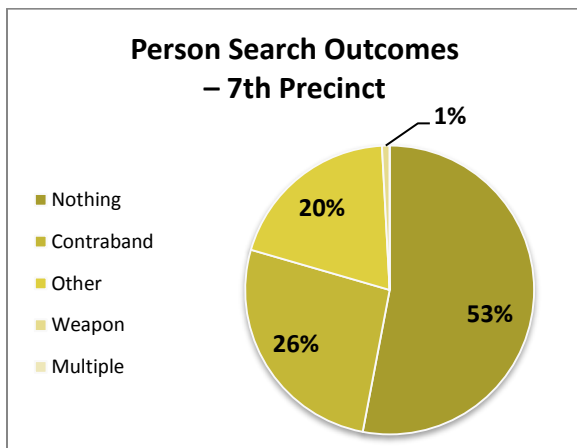
Counts & Percentages – Reasons why Person Searches were conducted and their outcomes.



Category	Incidence of Person Searches			
	SCPD	%	7PCT	%
Person Searches	2094	3.2%	117	2.2%
Non-Searches	62929	96.8%	5108	97.8%
<b>Total Stops</b>	<b>65023</b>	<b>100.0%</b>	<b>5225</b>	<b>100.0%</b>



Category	Person Search Reasons			
	SCPD	%	7PCT	%
Consent	153	7.3%	11	9.4%
Plain View	115	5.5%	4	3.4%
Prob. Cause	766	36.6%	54	46.2%
Protective Frisk	416	19.9%	2	1.7%
Incident to Arrest	644	30.8%	46	39.3%
<b>Total</b>	<b>2094</b>	<b>100.0%</b>	<b>117</b>	<b>100.0%</b>



Category	Person Search Outcomes			
	SCPD	%	7PCT	%
Nothing	1458	69.6%	62	53.0%
Weapon	20	1.0%	1	0.9%
Contraband	547	26.1%	31	26.5%
Other	63	3.0%	23	19.7%
Multiple	6	0.3%	0	0.0%
<b>Total</b>	<b>2094</b>	<b>100.0%</b>	<b>117</b>	<b>100.0%</b>