



# SCPD TRAFFIC STOP REPORTING

First Half of 2019 – 3rd Precinct

**Overview – Department – First Half of 2019**

**Synopsis**

Overview of Traffic Stops conducted per Precinct and total Traffic Stops for the Department. The entirety of this report covers the first 6 full months of 2019.

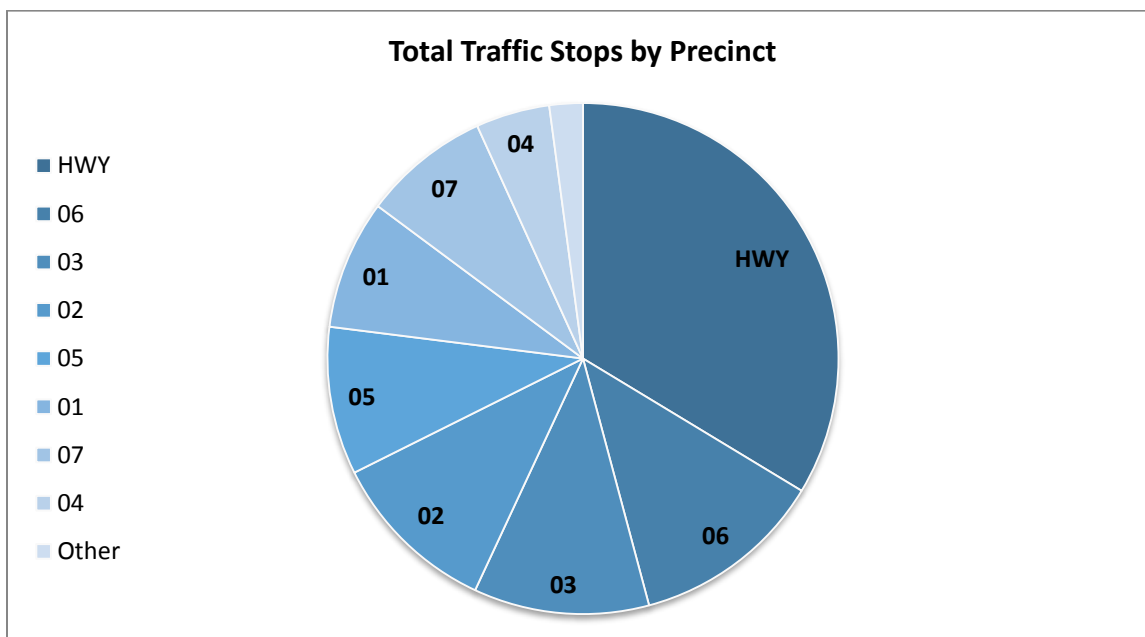
**Tables**

*Counts & Percentages – Traffic Stops conducted.*

Precinct	Total Traffic Stops	
	Stops	%
<b>HWY</b>	21885	33.7%
<b>06</b>	7919	12.2%
<b>03</b>	7218	11.1%
<b>02</b>	6955	10.7%
<b>05</b>	6085	9.4%
<b>01</b>	5320	8.2%
<b>07</b>	5225	8.0%
<b>04</b>	3040	4.7%
<b>Other</b>	1376	2.1%
<b>SCPD</b>	65023	100.0%

**Figures**

*Comparison of Traffic Stops by Precinct.*



**Traffic Stop Reports – Overview**  
**Precinct Reporting – Semiannual**  
**Office of the Commissioner – Legal**  
**2019 1<sup>st</sup> Half Report – 3<sup>rd</sup> Precinct**

**Overview – 3PCT – Stop Reason**

**Synopsis**

Traffic Stops broken down by category.

**Tables**

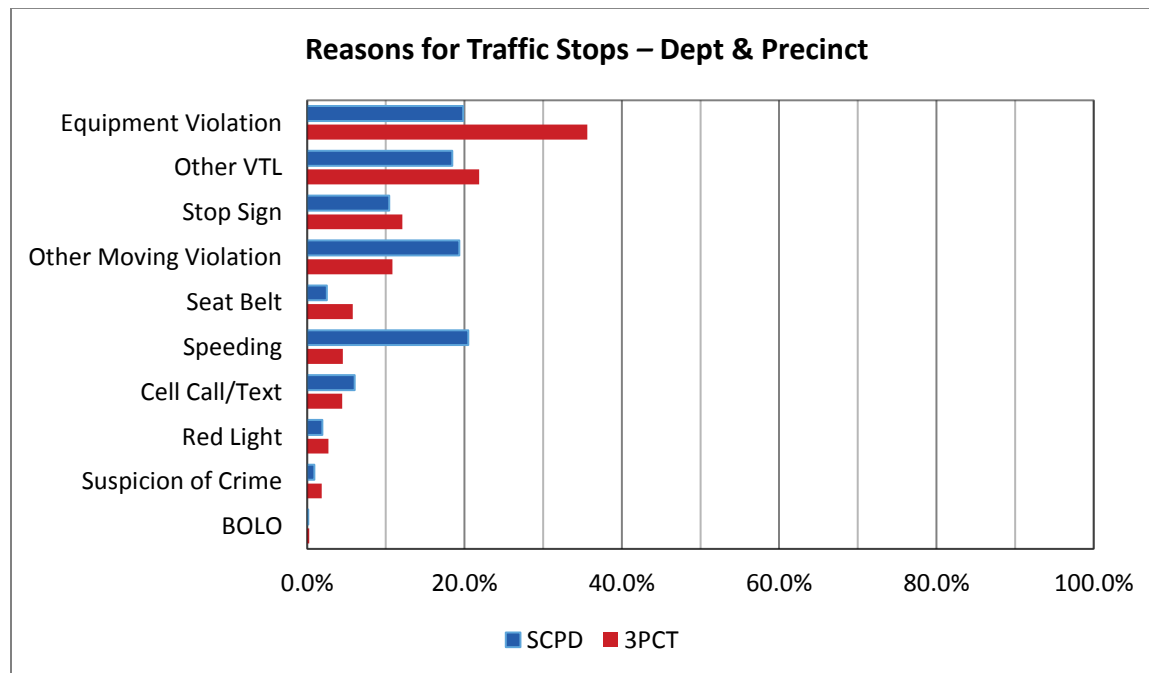
Counts & Percentages – Reasons why Traffic Stop was conducted. The table on the right contains the total counts of equipment violations occurring per stop, for traffic stops initiated because of equipment violations.

Category	Reasons for Traffic Stops				PCT	Stops by # of Equipment Violations						
	SCPD	%	3PCT	%		1	2	3	4	5+	**NA	Total
Speeding	13305	20.5%	328	4.5%	01	630	198	43	25	16	696	1608
Cell Call/Text	3923	6.0%	322	4.5%	02	1036	224	22	26	13	681	2002
Red Light	1254	1.9%	195	2.7%	03	1291	251	45	17	5	963	2572
Stop Sign	6773	10.4%	873	12.1%	04	375	60	3	3	1	253	695
Suspicion of Crime	590	0.9%	132	1.8%	05	808	189	26	12	7	604	1646
Other Moving Viol.	12568	19.3%	781	10.8%	06	773	85	11	9	9	908	1795
Seat Belt	1630	2.5%	417	5.8%	07	514	76	6	1	0	903	1500
Other VTL	11994	18.4%	1578	21.9%	HWY	178	51	24	9	31	450	743
BOLO	83	0.1%	20	0.3%	Other	152	20	5	1	0	164	342
Equipment Viol.	12903	19.8%	2572	35.6%	SCPD	5757	1154	185	103	82	5622	12903
<b>Total</b>	<b>65023</b>	<b>100.0%</b>	<b>7218</b>	<b>100.0%</b>								

\*\* NA: data not available or incomplete

**Figures**

Comparisons of reasons why Traffic Stops were conducted between the Department and your Precinct.



## Overview – 3PCT – Stop Disposition

### Synopsis

Traffic Stop dispositions broken down by category.

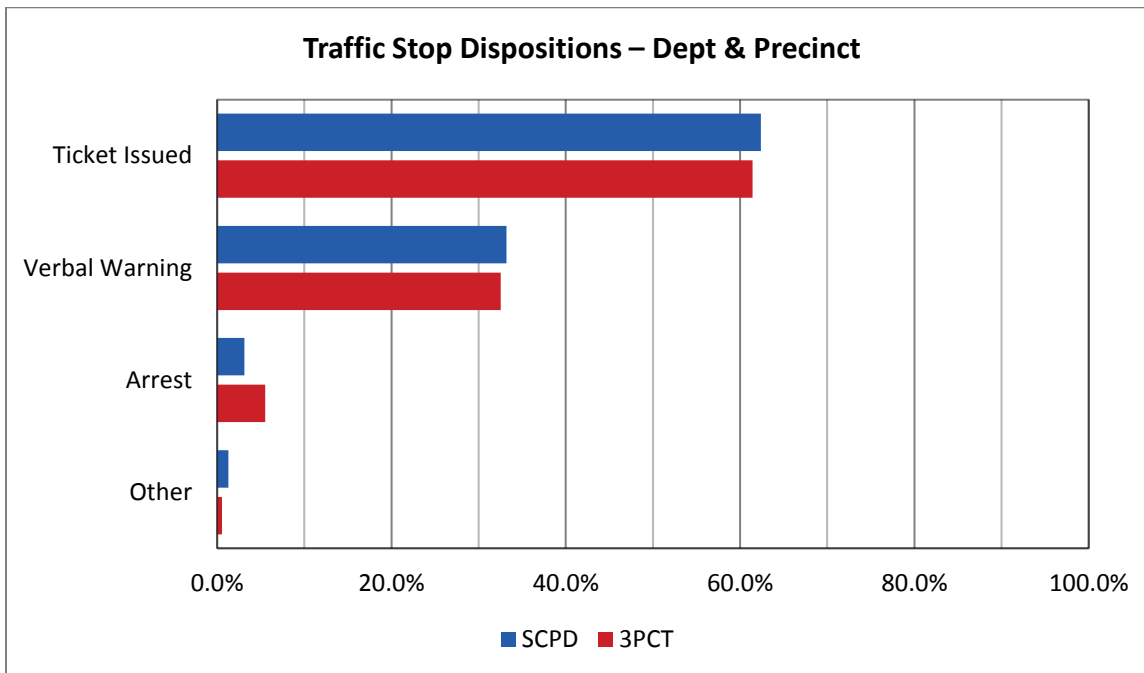
### Tables

*Counts & Percentages – Traffic Stop dispositions.*

Category	Traffic Stop Dispositions			
	SCPD	%	3PCT	%
Ticket Issued	40557	62.4%	4433	61.4%
Verbal Warning	21589	33.2%	2347	32.5%
Arrest	2035	3.1%	397	5.5%
Other	842	1.3%	41	0.6%
<b>Total</b>	<b>65023</b>	<b>100.0%</b>	<b>7218</b>	<b>100.0%</b>

### Figures

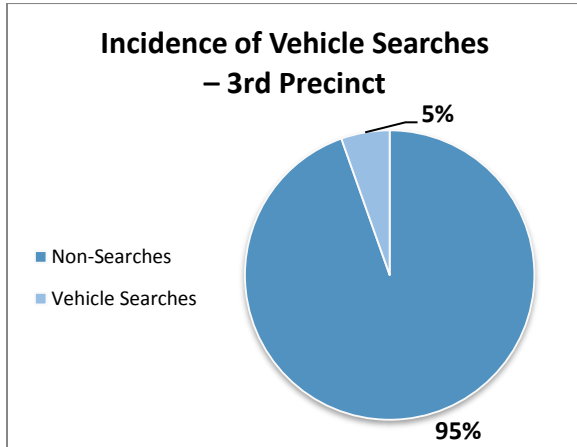
*Comparisons of Traffic Stop dispositions between the Department and your Precinct.*



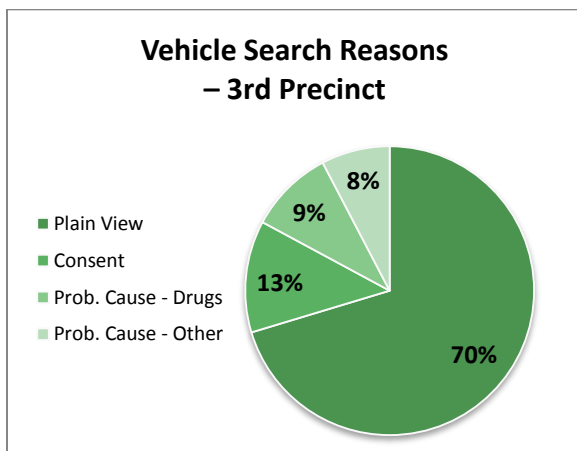
**Overview – 3PCT – Vehicle Searches**

**Tables & Figures**

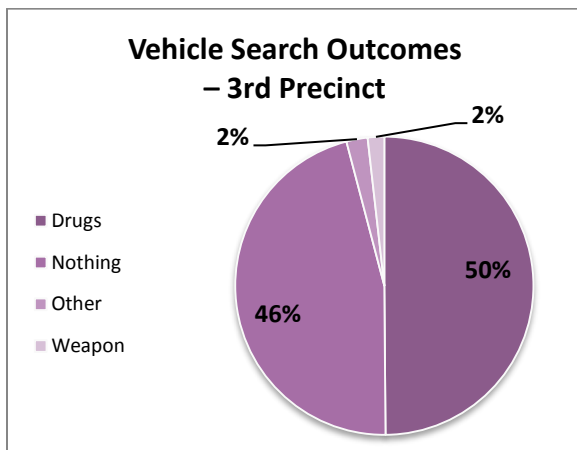
*Counts & Percentages – Reasons why Vehicle Searches were conducted and their outcomes.*



Category	Incidence of Vehicle Searches			
	SCPD	%	3PCT	%
Vehicle Searches	1842	2.8%	391	5.4%
Non-Searches	63181	97.2%	6827	94.6%
<b>Total Stops</b>	<b>65023</b>	<b>100.0%</b>	<b>7218</b>	<b>100.0%</b>



Category	Vehicle Search Reasons			
	SCPD	%	3PCT	%
Consent	174	9.4%	49	12.5%
Plain View	1249	67.8%	275	70.3%
Prob. Cause - Drugs	187	10.2%	37	9.5%
Prob. Cause - Other	232	12.6%	30	7.7%
<b>Total</b>	<b>1842</b>	<b>100.0%</b>	<b>391</b>	<b>100.0%</b>

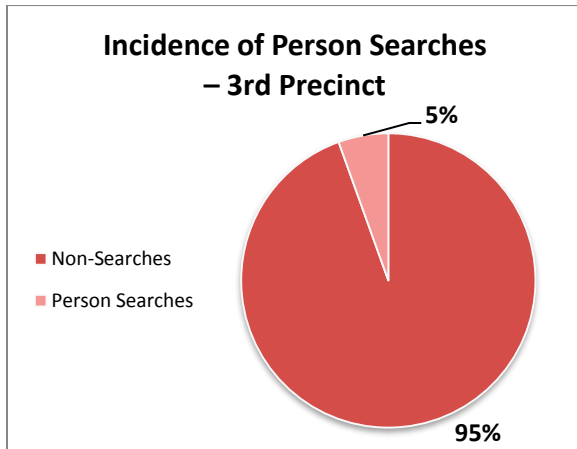


Category	Vehicle Search Outcomes			
	SCPD	%	3PCT	%
Nothing	837	45.4%	180	46.0%
Weapon	23	1.2%	7	1.8%
Drugs	935	50.8%	195	49.9%
Other	47	2.6%	9	2.3%
<b>Total</b>	<b>1842</b>	<b>100.0%</b>	<b>391</b>	<b>100.0%</b>

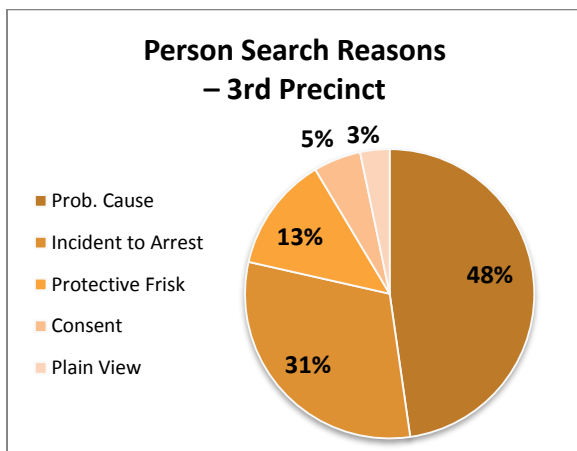
**Overview – 3PCT – Person Searches**

**Tables & Figures**

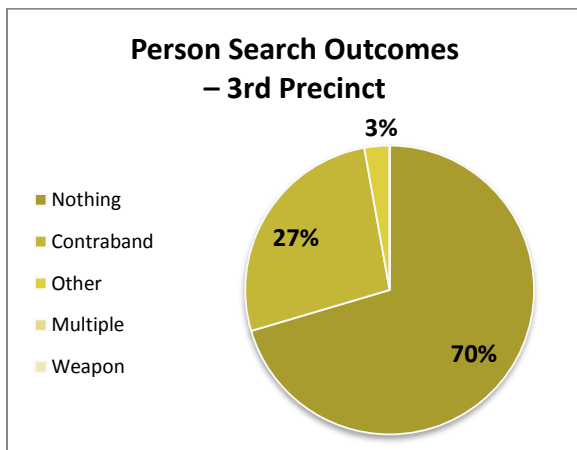
Counts & Percentages – Reasons why Person Searches were conducted and their outcomes.



Category	Incidence of Person Searches			
	SCPD	%	3PCT	%
Person Searches	2094	3.2%	396	5.5%
Non-Searches	62929	96.8%	6822	94.5%
<b>Total Stops</b>	<b>65023</b>	<b>100.0%</b>	<b>7218</b>	<b>100.0%</b>



Category	Person Search Reasons			
	SCPD	%	3PCT	%
Consent	153	7.3%	21	5.3%
Plain View	115	5.5%	13	3.3%
Prob. Cause	766	36.6%	189	47.7%
Protective Frisk	416	19.9%	51	12.9%
Incident to Arrest	644	30.8%	122	30.8%
<b>Total</b>	<b>2094</b>	<b>100.0%</b>	<b>396</b>	<b>100.0%</b>



Category	Person Search Outcomes			
	SCPD	%	3PCT	%
Nothing	1458	69.6%	50	70.4%
Weapon	20	1.0%	0	0.0%
Contraband	547	26.1%	19	26.8%
Other	63	3.0%	2	2.8%
Multiple	6	0.3%	0	0.0%
<b>Total</b>	<b>2094</b>	<b>100.0%</b>	<b>71</b>	<b>100.0%</b>